

# BOOKABLE CLASSROOMS & LECTURE HALLS

MD - Moveable student desks  
 FTMC - Fixed tables with moveable chairs  
 MTC - Moveable tables and chairs

FTC - Fixed tables and chairs  
 FS - Fixed seating w/flip up surface  
 WC - Wheelchair accessible

mm - Multimedia  
 \* - MUNNET active  
 Blackboards - All rooms

For prices visit <https://www.mun.ca/meet/pricing/>. 100% discount for Memorial researchers, staff, and MUN-ratified student groups.



## Arts & Administration Building [\[campus map\]](#)

ROOM	CAP	ROOM	CAP	ROOM	CAP
A 1043* mm (WC)	100 FS (+2 WC)	A 1049* mm	48 FTC	A 3017 mm	48 MD
A 1045* mm	48 FTC	A 2065 mm	54 FTC (+1 WC)	A 3020 mm	46 FTC
A 1046* mm (WC)	100 FS (+2 WC)	A 2071 mm	60 FTC		



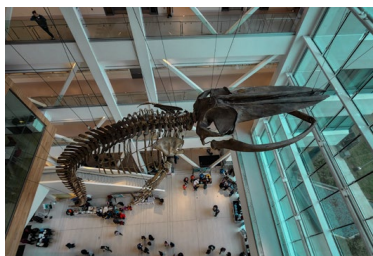
## Bruneau Centre for Innovation [\[campus map\]](#)

ROOM	CAP	ROOM	CAP
IIC 2001 (Bruneau Centre)	320 FS (WC)	Bruneau Atria	150



## Chemistry Building [\[campus map\]](#)

ROOM	CAP	ROOM	CAP	ROOM	CAP
C 2003 computer lab	42 (SPSS software)	C 2033 mm	60 FS	C 4002 mm	50 MD
C 2004 mm (D2L)	177 FS (+2 WC)	C 3033* mm	100 FS	C 4011 mm	47 MD
C 2024	20 MTC	C 3053	59 FTMC	C 4036 mm	60 FS
C 2026 mm	25 MTC	C 3055	32 FTC		



## Core Sciences Building [\[campus map\]](#)

ROOM	CAP	ROOM	CAP
Whale Atrium	250 WC	CSF FULL - 1302/1309A/1309B MTC mm	112 MTC
CSF 1302 mm	64 MTC	CSF 1309A mm	24 MTC
CSF 1309B mm	24 MTC		



## Education Building [\[campus map\]](#)

ROOM	CAP	ROOM	CAP	ROOM	CAP
ED 1005 mm	55 MD	ED 2018A* mm	108 FS	ED 3048 mm	60 FTC
ED 1014* mm	108 FTC (WC)	ED 2018B* mm	108 FS	ED 4008* mm	60 MD
ED 1020* mm (WC) (D2L)	329 FS (WC)	ED 3023	48 MD	ED 4010	25 MD
ED 2002*	35 MD	ED 3030*	40 MD	ED 4011 mm	60 MD
ED 2003* mm	60 MD	ED 3034A* mm	104 FTC	ED 4015* mm	40 MD
ED 2004	32 MTC	ED 3034B* mm	104 FTC	ED 4034 mm	60 MD



## Engineering Building [\[campus map\]](#)

ROOM	CAP	ROOM	CAP	ROOM	CAP
EN 1001 mm	44 MTC	EN 1052 (c. lock)	48 FTMC	EN 2043 mm	130 FTC
EN 1002 mm	30 MTC	EN 1054 mm (c. lock)	108 FTC		
EN 1003 mm	30 MTC	EN 2006 mm (D2L)	234 FS (2 WC)		
EN 1004 mm	29 MTC	EN 2007 mm	70 MD		
EN 1051 (c. lock)	48 FTMC	EN 2040 mm	116 (2 WC) FTC		



## Science Building [\[campus map\]](#)

ROOM	CAP	ROOM	CAP	ROOM	CAP
SN 2036* mm	60 FTMC	SN 2098* mm	72 FS	SN 3060* mm	50 MD
SN 2041*	40 MTC+MD	SN 2109* mm (2 WC)	255 FS	SN 4063* mm	50 MD
SN 2064* mm	50 MD	SN 3042 mm	70 MD	SN 4068 * mm	50 MD
SN 2067* mm	65 FTMC	SN 3058* mm	70 MD	SN 4073* mm	50 MD

